

Spring Planting Guidelines – Page 1

<i>Vegetable</i>	<i>Type</i>	<i>Plant Time</i>
Beets	Root	Feb – Mar
Bush Beans	Fruit	Mar – May
Pole Beans	Fruit	Mar – May
Lima Beans	Fruit	Mar – May
Broccoli	Fruit	Feb – Apr
Carrots	Root	Feb - Apr
Cabbage	Fruit	Feb – Apr
Cantaloupes	Fruit	Mar - Apr
Cauliflower	Fruit	Aug – Oct
Celery	Root	Jan- Mar

<i>Vegetable</i>	<i>Type</i>	<i>Plant Time</i>
Chinese Cabbage	Fruit	Feb - Mar
Collards	Leaf	Feb – Apr
Corn	Fruit	Mar - Apr
Cucumber	Fruit	Feb – Apr
Eggplant	Fruit	Feb – July
Endive	Leaf	Feb - Mar
Kolrabi	Root	Feb – Apr
Leeks	Root	Feb – Mar
Lettuce	Leaf	Feb – Mar
Mustard	Leaf	Feb – May

Spring Planting Guidelines – Page 2

<i>Vegetable</i>	<i>Type</i>	<i>Plant Time</i>
Onions (Bunch)	Root	Feb – Apr
Peas (English)	Fruit	Jan – Mar
Peas (Southern)	Fruit	Mar - Aug
Peppers	Fruit	Feb – Apr
Potatoes	Root	Jan – Mar
Pumpkin	Fruit	Mar - Apr
Radish	Root	Jan – Apr
Spinach	Leaf	Feb - Mar
Summer Squash	Fruit	Mar – Apr

<i>Vegetable</i>	<i>Type</i>	<i>Plant Time</i>
Winter Squash	Fruit	March – Apr
Strawberry	Fruit	Feb - Apr
Tomatoes	Fruit	Feb – Apr
Turnips	Root	Jan - Apr
Watermelon	Fruit	Mar - Apr

Fall/Winter Planting Guidelines

<i>Vegetable</i>	<i>Type</i>	<i>Plant Time</i>
Beets	Root	Sept – Mar
Bush Beans	Fruit	Aug – Sept
Pole Beans	Fruit	Aug – Sept
Lima Beans	Fruit	August
Broccoli	Fruit	Sept – Mar
Brussel Sprouts	Fruit	Sept – Nov
Carrots	Root	Sept – Mar
Cabbage	Fruit	Sept – Feb
Cauliflower	Fruit	Aug – Oct
Chinese Cabbage	Fruit	Oct – Feb
Collards	Leaf	Feb – Apr
Cucumber	Fruit	Aug – Sept
Eggplant	Fruit	Feb – July
Endive	Leaf	Sept

<i>Vegetable</i>	<i>Type</i>	<i>Plant Time</i>
Kale	Leaf	Sept – Feb
Kolrabi	Root	Sept – Mar
Leeks	Root	Sept – Mar
Lettuce	Leaf	Sept – Oct
Mustard	Leaf	Sept – May
Onions (Bulb)	Root	Sept – Dec
Onions (Bunch)	Root	Aug – Mar
Peppers	Fruit	July – Aug
Radish	Root	Sept – Mar
Spinach	Leaf	Oct - Nov
Summer Squash	Fruit	Aug – Sept
Tomatoes	Fruit	Aug – Sept
Turnips	Root	Aug - Oct
Watermelon	Fruit	August

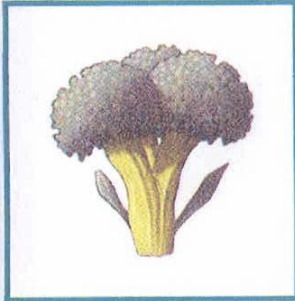
PLANT SPACING

Extra Large

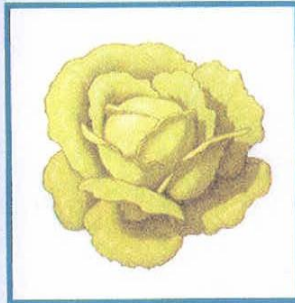
1 Plant

Placed 12 inches apart:

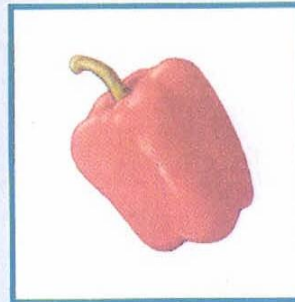
Broccoli



Cabbage



Pepper

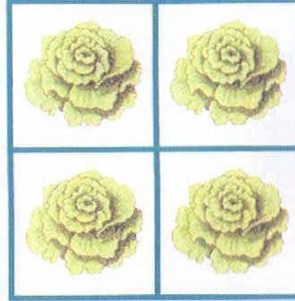


Large

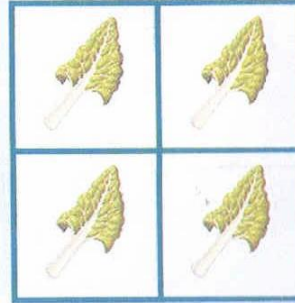
4 Plants

Placed 6 inches apart:

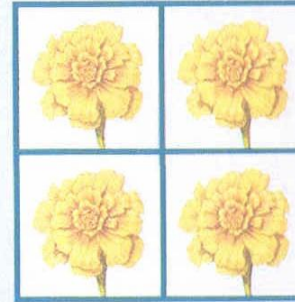
Leaf Lettuce



Swiss Chard



Marigold

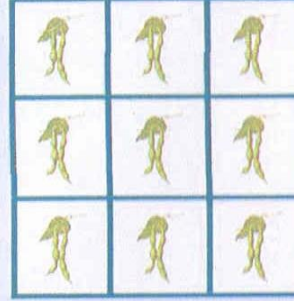


Medium

9 Plants

Placed 4 inches apart:

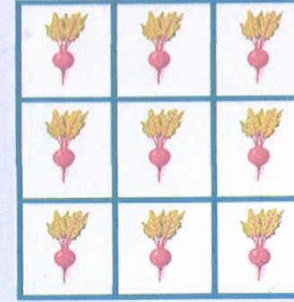
Bush Bean



Spinach



Beet

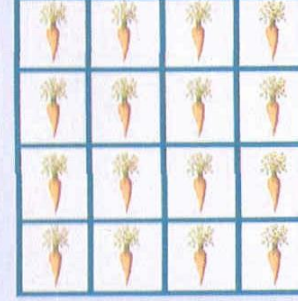


Small

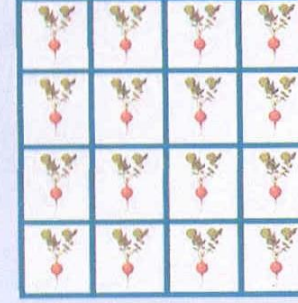
16 Plants

Placed 3 inches apart:

Carrot



Radish



Onion

